



Medical LED Illumination  
Small Operating Light

**Luvis-S**



# Luvis-S200

## Introducing the most versatile minor procedure light on the medical field

The Luvis-S200 allows users to focus the light field; to adjust the light intensity and color in easy-to-use control panel. It makes the Luvis-S200 the ultimate minor procedure light.

The state of the art of LED Technology Luvis-S200 standard model is equipped with the patent: hybrid optical system and the simplified lighting spot control with removable and autoclavable handle.



# Natural & Comfortable Light

## High Color Rendering Index(CRI)

Luvis-S200 suggests high CRI of Ra 90 which may realize more clear and nature-like color. It helps reduce the eye fatigue compared to higher brightness with low CRI.



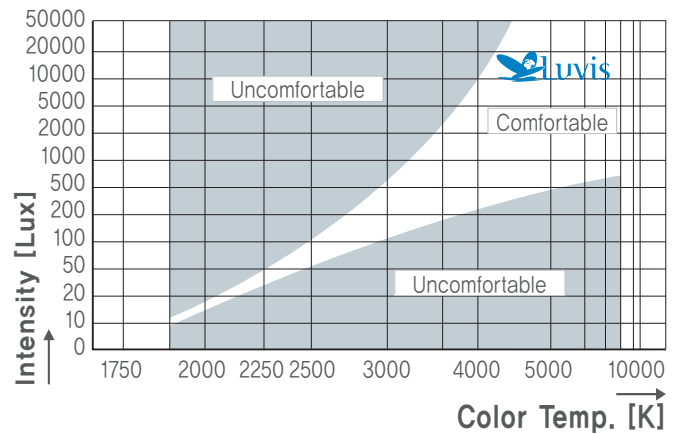
HIGH CRI



LOW CRI

## Comfortable Light

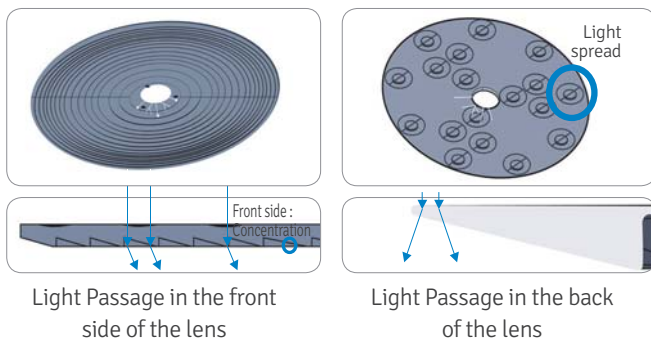
In case of lower color temperature with high light intensity, eye dazzling effect occurs. At the same light intensity, high color temperature gives much brighter light field. Given that comfort light should consider the balance between intensity(brightness) and color temperature, users easily know the merit of LUVIS-S200 as it allows to control both index. Surgeon may set adequate eye comfort circumstance by customizing intensity and color temperature.



# Advanced Technology

Patent No. : 10-2012-0068641

## Pattern changeable Flat Lens



- Pattern size for Luvis-S200 can be adjusted to different operations. According to the size of the affected area, pattern size can be controlled from 18cm to 30cm.
- For intensive illumination in specific area, 18cm focus can be selected.
- For wider focus and more scalytic effect, 30cm focus can be selected.

Patent No. : 10-2012-0068641

## Hybrid LED Reflector



- Hybrid LED Optical Design combined lens and reflector ensures high light intensity and efficiency compared to normal reflector.
- Making cool light is crucial for preventing dry-up of the affected area during the surgery. Hybrid mechanism of Luvis-S200 helps have energy saving performance which is directly linked to lower temperature light.

# Features and Benefits

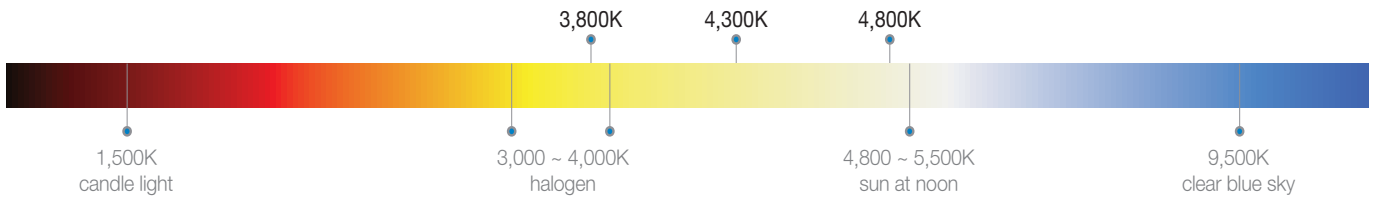
## Adjustable Focus

By rotating central knob, users can easily select the focal size from 18cm to 30 cm.



## Selectable Color Temperature

Intuitive control panel makes color temperature control easier. (3800K/4300K/4800K)  
Surgeons can customize the color of beam as for the purpose of use.



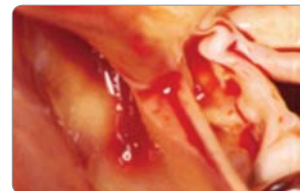
## Intensity Control in 5 Steps

Wide range of intensity(5,000LUX~100,000LUX) will allow the easier setting of adequate circumstance for surgeon.



## The Highest Level of Color Rendering Ability (Ra 90)

The Luvis-S200 uses high quality color rendering technology and suggests the perfect color based on the wound field texture and tissue type so that it helps reducing the possibility of unexpected mistakes during the surgery.



Luvis-S200



Lower CRI

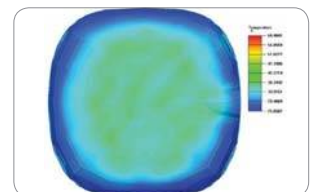
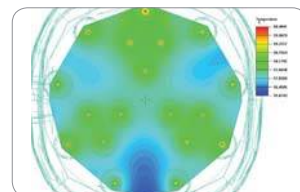
## Scialytic effect

The high optical efficiency of the Luvis-S200 is based on an innovative lens system with 18 LED sources that ensures a beam of light with wide scialytic effect.



## No heat, Cool light

Less than 0.5 degree on the affected area  
Noiseless cooling system



## Detachable Handgrip

Rotation grip to select the focal size  
Easy and stable handling  
Autoclavable material



# Technical Specification

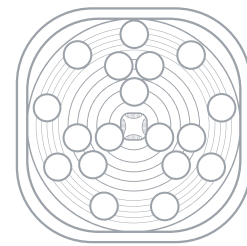
Number of LED(EA)		18
Head Size(cm)		35 X 34
Illumination EC at 1m working distance	Max.(Lux)	100,000 (@ 1M)
	Min. (Lux)	5,000
Color Rendering Index	Ra	90
	R9	80
Color Temperature(K)		3,800 / 4,300 / 4,800
Focus Field Size	Max.(cm)	Max. 30
	Min. (cm)	Min. 18
Depth of Illumination (L1 + L2)	Ec 60%	92

Radiant Energy		3.2mW/m2-lx
Irradiance		192 W/m2
Dilution Effect	With Tube(%)	100
	2 mask(%)	48
	2 mask + Tube(%)	46
Power Consumption		≤ 25
Life Span(hours)		50,000

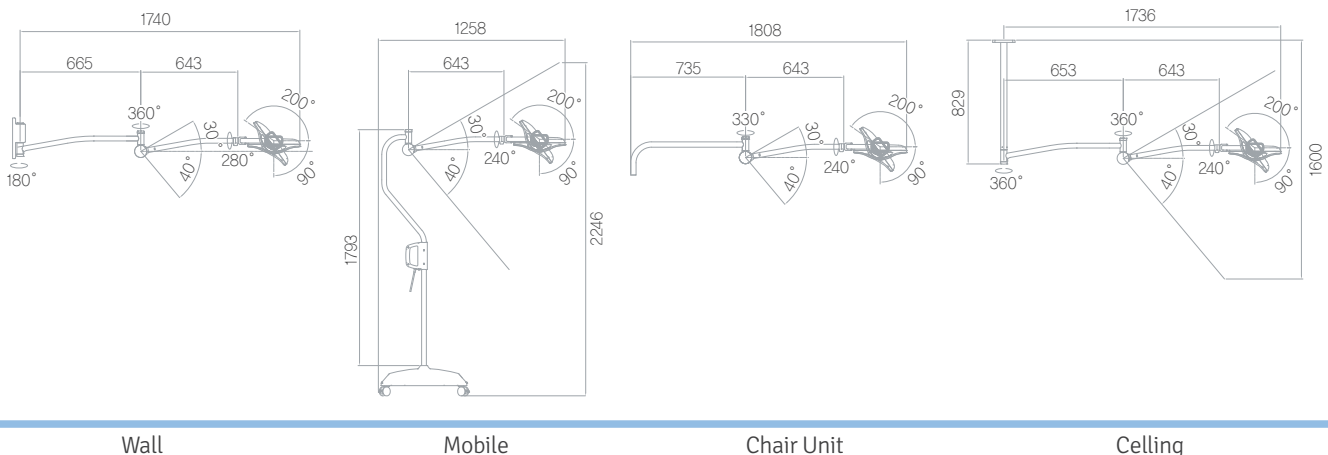
No.	MODEL	TYPE	COLOR	AUTHORIZATION CODE	ORDER CODE
1	S200	MOBILE	IVORY	PL2S10-002A1	S200 MOBILE_CE
2			BLUE	PL2S10-002A0	S200 MOBILE_CE
3		CHAIR	IVORY	PL2S20-002B1	S200 CHAIR_CE
4			BLUE	PL2S20-002B0	S200 CHAIR_CE
5		WALL	IVORY	PL2S30-002C1	S200 WALL_CE
6			BLUE	PL2S30-002C0	S200 WALL_CE
7		CEILING	IVORY	PL2S40-002D1	S200 CEILING_CE
8			BLUE	PL2S40-002D0	S200 CEILING_CE
9		DUALCEILING	IVORY	PL2S50-002E1	S200 DUAL CEILING_CE
10			BLUE	PL2S50-002E0	S200 DUAL CEILING_CE

## Head Size and Weight

35 cm X 34 cm / 3.5 kg



## Various Installation



# S200

100,000 Lux + 100,000Lux



## Intensity Control in 5 Steps



**Illumination Intensity**  
100,000Lux (Max.)

**Color Temperature**  
3,800K / 4,300K / 4,800K



## Adjustable Focus

Select focal size easily from 18cm to 30cm

## Detachable Handgrip

Easy and stable handling  
autoclavable material



Installation Guide Video



## Other Configuration



Model	Code No.
S200 MOBILE	PL2S10-002A1(S200)



Model	Code No.
S200 CEILING	PL2S40-002D0(S200)



Model	Code No.
S200 WALL	PL2S30-002C0(S200)



Manufacturer  
**DENTIS Co., LTD**



DENTIS is a company specialized in medical devices that started from dental implants and provides professional medical devices, equipment and service such as medical LED Light. LUVIS is flagship brand of DENTIS.

In 2011, Medical LED Lighting industry relied on imports. However, DENTIS successfully localized dental LED Lights for the first time in Korea. In 2012, launching medical LED Lights, DENTIS has been supplying LED Lights to diversified medical field such as plastic surgery, dermatology, obstetrics and gynecology, ophthalmology as well as dental.

With strong power on engineering and Quality Control System, all of LED lighting products are being provided as high quality products in the domestic market and will lead the global medical market.

Ultimate goal of Luvis is providing optimal environment that protects the doctor's eyes and patient's health at the same time by utilizing high CRI technology. As providing optimal environment, DENTIS is not going to neglect to get customer's needs, and we promise to do our best to deliver valuable products and service to our client with all of our wisdom and passion.



**Head Office**

99, Seongseoseo-ro, Dalseo-gu, Daegu, Korea Tel 053-582-2804 / Fax 053-583-2806

**texDAN**

**texDAN s.r.o., Havlíčkova 437, 542 32 Úpice; IČ: 287 68 591**  
**mobil: +420 739 693 258, +420 603 558 500**  
**info@texdan.com www.texdan.com**